

BARNETT MILLWORKS

Infinity Ultra Frames

Infinity Ultra Frames are made of a poly fiber material that won't rot, warp, or absorb water. They can be machined, stapled, nailed, or screwed just like wood. The white capped version which we supply has a smooth finish that can be installed without being painted, but can be painted if you choose. To paint the white capped frame: wipe thoroughly with an appropriate cleaner such as ProClean, Professional Prep Wash Concentrated Cleaner or de-glosser. Do not sand or abrade. Rinse and let dry. Paint, applying 2 coats of high gloss enamel such as Sherwin Williams Super Paint high gloss enamel. No primer is needed

Clean unpainted frames with Soft Scrub, 409, Lysol Cleaner or vinegar and water.

DO NOT use Clorox, Pine Sol, Grease Relief, or any acetone based product for cleaning.

Suggested Installation Instructions

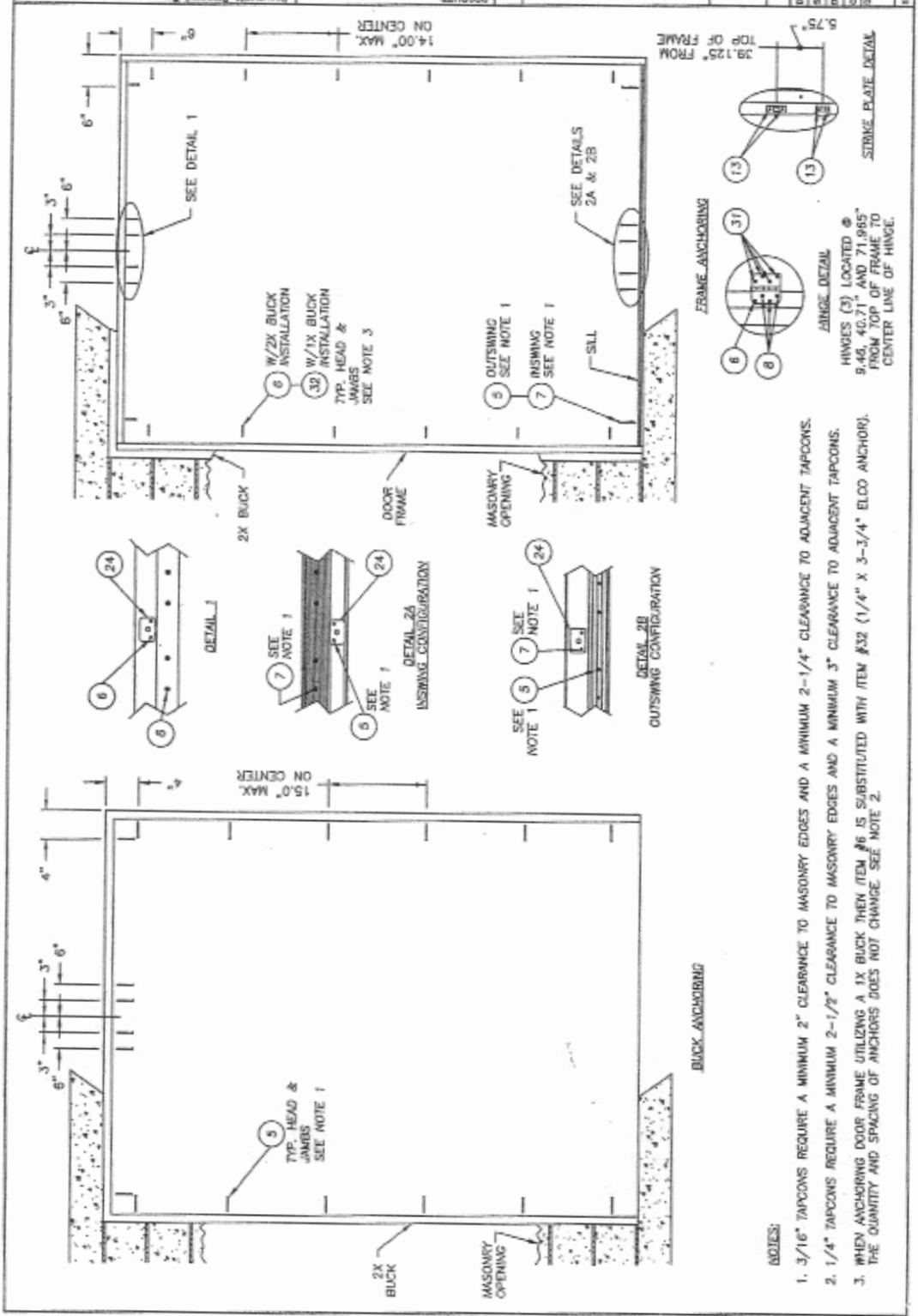
* Install just as you would install a wood frame. High gloss white caulk can be used to cover nail or screw holes. All sidelight units must be installed in this manner. Sidelight panels are installed and screwed into the frame from both sides.

** Single and Double Units:

Hinge jamb-each hinge attached to the jamb is shipped with (2) short screws left out. The holes are predrilled to receive (2) 2-1/2" long screws at installation. If the unit is not firmly against the studs, it must be shimmed at each hinge. Make sure unit is plumb, and install long screws provided, at each hinge jambs.)
Strike jamb or lock side- the jamb will be predrilled behind the weather-stripping in several locations, depending on unit height. If unit is not tight against the studs, shim at each predrilled location. Make sure the unit is plumb, and the margin between the door panel and jamb is equal from top to bottom. Install 2-1/2" screws provided, at each predrilled location.

*Check local building codes.

*In Florida, ask dealer for installation diagram, or go to www.floridabuilding.org and look under Plastpro/Nanya , exterior doors.

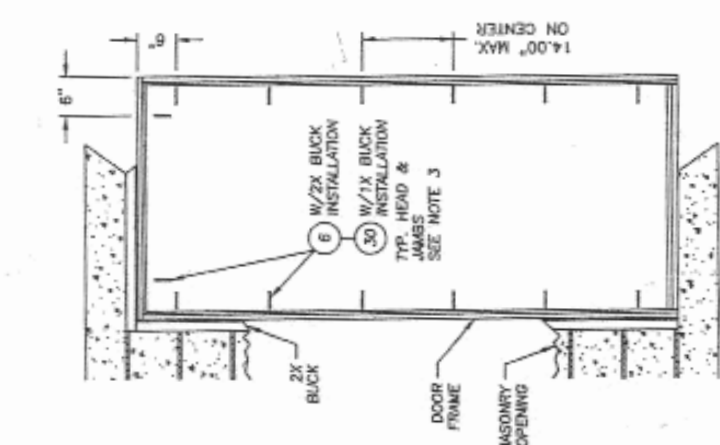


NOTES:

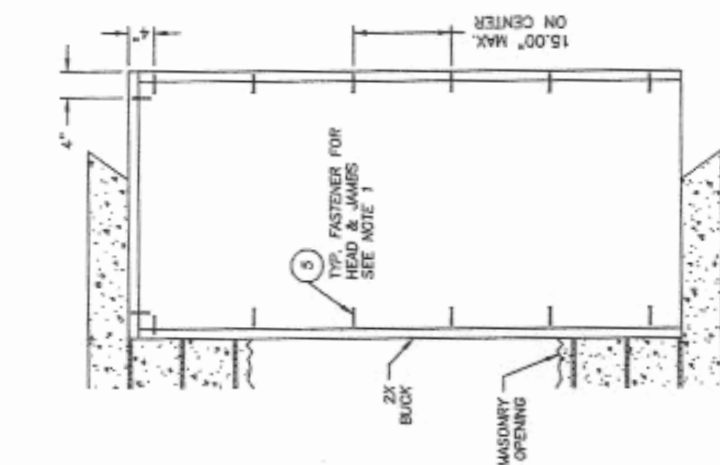
1. 3/16" TAPCONS REQUIRE A MINIMUM 2" CLEARANCE TO MASONRY EDGES AND A MINIMUM 2-1/4" CLEARANCE TO ADJACENT TAPCONS.
2. 1/4" TAPCONS REQUIRE A MINIMUM 2-1/2" CLEARANCE TO MASONRY EDGES AND A MINIMUM 3" CLEARANCE TO ADJACENT TAPCONS.
3. WHEN ANCHORING DOOR FRAME UTILIZING A 1X BUCK THEN ITEM #6 IS SUBSTITUTED WITH ITEM #32 (1/4" X 3-3/4" ELCO ANCHOR). THE QUANTITY AND SPACING OF ANCHORS DOES NOT CHANGE. SEE NOTE 2.

R.W. BUILDING CONSULTANTS, INC.
 2300 W. 30th Ave., Suite 200
 Fort Lauderdale, FL 33309
 Phone: (954) 573-9177
 Fax: (954) 573-9178
 E-mail: info@rwbc.com

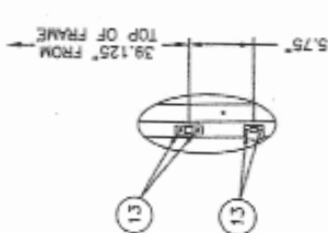
BUILDING CONSULTANTS, INC. 3900 S.W. 15th Avenue, Suite 100 Fort Lauderdale, Florida 33304 Telephone: (305) 461-2222 Fax: (305) 461-2223 Website: www.bci.com		PART OR ASSEMBLY DISTANCE SERIES 10" x 6" OPALTE FIBERGLASS DOOR INSULMING / OUTSLING		REVISIONS NO. DATE BY	
Documents prepared by: R.W.		PRODUCT: BUCK & FRAME ANCHORING		DATE: 01/13/06	
CHECKED BY: N.T.S.		DRAWN BY: AEM		PROJECT NO.: FL-853	
SCALE:		DRAWING NO.:		SHEET NO.: 3 of 4	



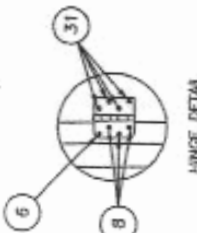
FRAME ANCHORING



BUCK ANCHORING



STRIKE PLATE DETAIL



HINGE DETAIL

- NOTES:
- 3/16" TAPCONS REQUIRE A MINIMUM 2" CLEARANCE TO MASONRY EDGES AND A MINIMUM 2-1/4" CLEARANCE TO ADJACENT TAPCONS.
 - 1/4" TAPCONS REQUIRE A MINIMUM 2-1/2" CLEARANCE TO MASONRY EDGES AND A MINIMUM 3" CLEARANCE TO ADJACENT TAPCONS.
 - WHEN ANCHORING DOOR FRAME UTILIZING A 1X BUCK THEN ITEM #6 IS SUBSTITUTED WITH ITEM #30 (1/4" x 3-3/4" ELCO ANCHOR). THE QUANTITY AND SPACING OF ANCHORS DOES NOT CHANGE. SEE NOTE 2.